

Read and Carefully Follow These Directions And Your Coleman Lamp Will Reward You With Years of Good Service

1. TO ASSEMBLE—

Unless your dealer assembles your new Coleman Instant-Lite Lamp for you, it will come to you packed in a carton, and in three separate parts, as follows:

- 1—Fount with handle
- 2—Burner with Instant-Lite Generator
- 3—Shade

In addition there will be two Coleman mantles and a wrench.

(Model No. 117 has separate pump also.)

Screw *burner* onto handle and tighten firmly by hand. Do not use wrench. A little soap on the threads will prevent leakage.

2. TO FILL—

Do not use doped, colored or anti-knock gasolines.

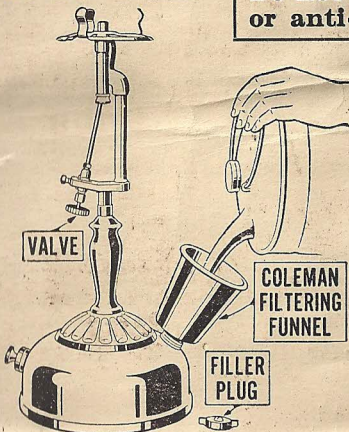


Fig. 2

Be sure *Valve* (Fig. 2) is tightly closed to right. Then remove *Filler Plug* (Fig. 2) and fill fount with three pints of clean, untreated, water-white gasoline (also known as "Petrol," "Motor Spirits," or "Essence").

When filling the lamp fount strain the gasoline through



Fig. 1

4. TO PUT ON MANTLES—

Tie *Mantles* to grooves in *Burner Caps* with flat side of mantles parallel to *Generator* (Fig. 5).

Distribute folds of *Mantles* evenly at top and cut off surplus string.

Then light *Mantles* at bottoms with a match and allow them to burn until only a white ash remains—be careful not to jolt or touch *Mantles* after they are burned out.

NOTE—A broken mantle may overheat and crack the shade, so always replace broken *Mantles*.

5. TO LIGHT—

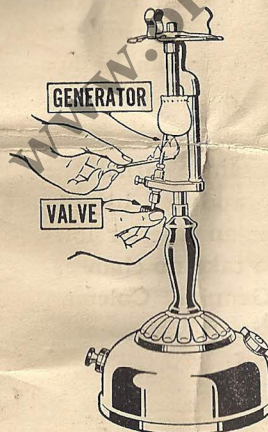


Fig. 6

Hold a lighted match just below mantles.

Then open *Valve* quickly as many turns as possible, (Give it the gas.) and mantles will light instantly.

IMPORTANT NOTICE—Because of the instant lighting principles incorporated in this new lamp, it lights best when cold. When lamp is warm (as it will be after mantles are burned off, or when relighted shortly after it has been used) better lighting results will be obtained by preheating generator with two matches for a few seconds before opening fuel valve.

1. Not enough air pressure is in fount. Pump in additional pressure.

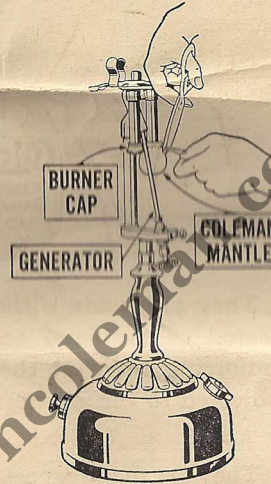


Fig. 5

SUGGESTIONS

About the Use and Care of Coleman Instant-Lite Lamps

1. If Lamp blazes up and smokes when you light it—

Cause—Lighting lamp in half-hot condition. This is nothing serious as the flame will burn out in a few seconds, and will be followed by full brilliance. **Remedy**—Read and follow directions given in Paragraph 5.

NOTE—See suggestion 6 below for other causes.

2. If Lamp doesn't light at all—

Cause—No fuel, lack of air pressure. **Remedy**—See that fount contains clean fuel and then pump in 30 strokes of air.

Cause—Gas tip (220-218) may be clogged. **Remedy**—Clean gas tip. See Paragraph 7.

Cause—Generator (T-88) stopped up by dirt or carbon. **Remedy**—Put in complete new generator (T-88).

3. If light grows dim rapidly or goes out suddenly—

Cause—Fount may leak air. **Remedy**—Pump up lantern and place fount in bucket of water to test for leak. If bubbles come from filler plug (118-140), put in new gasket (115-136), or get a new plug. If bubbles or gasoline come from around the bushing where support tube screws into fount, be sure connection is tight. If leak continues send fount and support tube to nearest Coleman office.

4. If a leak develops at lower end of Generator (T-88)—

Cause—Generator not seated properly in valve (216-654). **Remedy**—Close valve stem (T-56). Then tighten nut at bottom with wrench. If leak continues, put on new generator. If new generator fails to stop leaking, then trouble is with valve (216-654), which should be replaced by new one.

5. If generator (T-88) lasts only a short time—

Cause—May be dirty gasoline. **Remedy**—Clean fount thoroughly (See Par. 8). Strain gasoline when filling fount (see Paragraph 2).

6. If mantles turn black—

Cause—Air intake tube (216-372) or mixing chamber (216-326)

of finely woven cloth. Or, better still, use the new *Coleman (Schuyler Patent) Filtering Funnel*, No. 0, which removes water and dirt from the fuel. Your dealer has, or can get one for you.

As soon as fount is filled, replace *Filler Plug* and tighten firmly with fingers.

3. TO PUMP UP MODELS WITH BUILT-IN PUMP—

See that *Valve* is closed. Then open air valve inside of pump barrel by turning *Pump Plunger* one turn to left. Place ball of thumb over small hole in end of plunger rod and pump 30 full strokes of air into fount (see Fig. 3). Now, turn *plunger* to right until air valve is closed, and push *plunger* back into pump barrel.

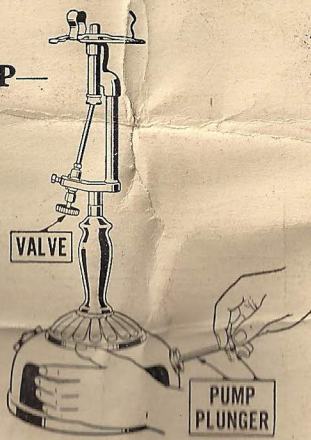


Fig. 3

3A. TO PUMP UP SEPARATE PUMP MODEL—

Be sure *Valve* is closed. Then loosen *Air Stem* on *Filler Plug*. One turn to left is enough.

Now, fit the *Pump* into the top of *Air Stem* and pump 25 to 30 full strokes of air into the fount. Then tighten *Air Stem*, turning to right with fingers. Do not use a wrench or pliers.

Fig. 4

1. Not enough air pressure is in fount. Pump in additional pressure.
2. Or Valve not opened wide enough.
3. Or tip partially clogged (see Paragraph 7).

6. TO TURN OUT LIGHT—

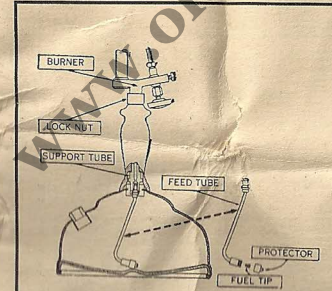
Turn valve to right until closed. The light will dim and go out in a few seconds.

7. TO CLEAN GAS TIP—

Small particles of carbon may partially clog the gas tip and cause poor light. To remove: Hold a lighted match under the mantles. Then open and close the valve several times, thus cleaning tip with needle.

8. CLEAN THE FOUNT OCCASIONALLY—

When the generator begins to clog up it is time to clean the fount. This may be done with a siphon but is best done with a *Coleman Suction Pump*, which is designed especially for this purpose. Your dealer, no doubt, has one that he can use to clean your fount for you. After the dirty fuel is removed from the fount put in some fresh, clean gasoline, rinse thoroughly, and siphon out again. Then fill fount with fresh, clean fuel. A clean fount and clean, untreated gasoline will do much toward eliminating generator trouble. Fount can also be cleaned by removing feed tube (Par. 9) and rinsing with clean gasoline.



the *support tube*. If so, unscrew *lock nut* with pliers and remove handle. Then unscrew *support tube* with an "S" wrench or monkey wrench.) Remove *feed tube* from fount. Pry the *feed tube* loose with screwdriver or wrench, then lift out with fingers. Unscrew *Protector* to left with pliers.

9. TO CLEAN FOUNT FEED TUBE—

Dirt may stop up the screen and tip in the fount feed tube, causing poor light. Clean as follows:

Remove *Filler Plug* to release all pressure in fount.

Remove burner, unscrew to left. (The Burner will sometimes unscrew at the *lock nut* connection instead of at the *support tube*.)

Unscrew *fuel tip* to left and clean *fuel tip* with tip pick furnished with Lamp. Also clean out screen in *protector* by rinsing with gasoline and blowing out.* Then replace *Fuel Tip* and tighten with wrench. Replace *Protector* and tighten with pliers. Replace *feed tube* in fount.

If *burner*, *lock nut*, *handle* and *support tube* have all come off together, replace them as they are, by screwing bottom of *support tube* into fount. If the *burner* and *other parts* were removed separately, replace them in the following order: Replace *support tube* and tighten with wrench. Put handle back into place and tighten *lock nut*. Then replace *burner* and tighten with hands.

*It is a good plan to clean fount when cleaning feed tube (See paragraph 8).

6. If mantles turn black—
Cause—Air intake tube (216-372) or mixing chamber (216-326) may be stopped up. Remedy—Clean air intake or mixing chamber.
Cause—Dirty screens in burner cap (112-323). Remedy—Unscrew burner caps and clean screens, or replace with new ones with wires of each screen placed diagonally with the other.
Cause—Hole in tip (220-218) may be enlarged. Remedy—Put on new tip.
Cause—Mantles used may be of inferior quality. Remedy—Always use Coleman Mantles.

7. If built-in pump does not work—

- Cause—Plunger leather may be dry. Remedy—Remove plunger leather and soften leather with oil.
- Cause—Plunger leather worn out. Remedy—Put in new leather.
- Cause—Check ball not seating. Remedy—Unscrew air stem (216-532) by turning pump plunger (118-517) to left several turns—then unscrew pump cap and pull out plunger and air stem. Insert screwdriver in pump barrel, unscrew and remove check valve body (216-538). Wash body thoroughly in gasoline and replace. Insert air stem shank and plunger in barrel and screw on cap. If pump yet does not work, replace the check valve body with a new one.

8. If water gets mixed with the fuel—

Clean fount as outlined in Paragraph 8.

9. On one filling of three pints of fuel—

The lamp will provide an average of from 12 to 15 hours' brilliant service, if directions for lighting and using are followed.

Three Things—

to do which will help this Coleman Lamp give you better service and longer service:

1. Always use a good grade of fresh, clean, water-white gasoline. **Do not use any of the doped, colored or anti-knock gasolines in any Coleman product.**
2. Read and carefully follow instructions given in this directions folder. If you will do this, you will avoid difficulties that result from improper operation and which are due to no fault of the Lamp.
3. Clean out the fount of the Lamp every few months. This keeps the residue which collects in the bottom of the fount from stopping up the generator (see Par. 8, inside).

This Directions folder is written for your convenience. It is worth while to follow instructions carefully step by step.

Always Use Genuine High Power Coleman Junior Mantles



1. They are made without side seams and are pleated or gathered across the bottom, thus reinforcing them at the point where they are subjected to the greatest gas pressure.
2. They are made especially for Coleman Lamps and Lanterns. They are just right in size, shape and texture. They are given just the right chemical treatment. They work perfectly with the gas tip and air intake in producing the splendid brilliance for which Coleman Lamps and Lanterns are famous.

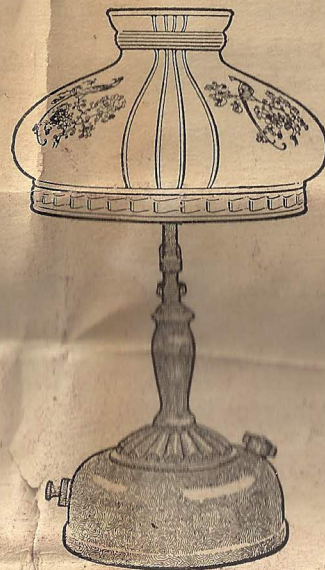
This is why we can not guarantee either the quality or quantity of light produced by any Coleman Lamp or Lantern if an inferior low-grade mantle is used on it. So take no chances. Always insist on having Genuine Coleman Mantles.

DIRECTIONS

For Operating

Coleman

Instant-Lite Lamps



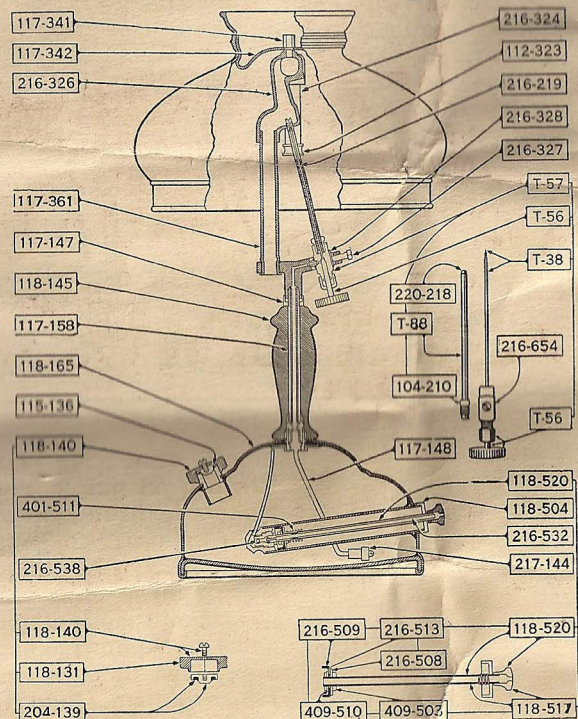
The Coleman Lamp & Stove Co.
Formerly The Coleman Lamp Company

General Offices: **WICHITA, KANSAS**
Branches: Philadelphia, Chicago, Los Angeles
Factories: Wichita, Chicago, and Toronto, Can.

PRICE LIST OF PARTS FOR COLEMAN INSTANT-LITE LAMPS

Models 118 and 119

With Built-in Pump

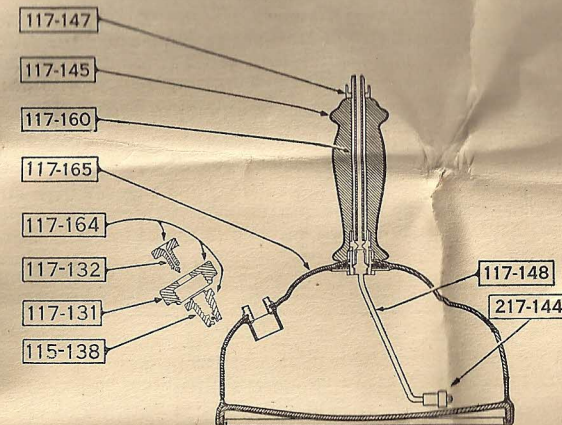


Parts No.	All parts interchangeable except those listed under Model 117	Retail Price
T-38	Needle and Tube only.....	\$.15
T-56	Valve Stem complete with Needle and Tube.....	.60
T-57	Valve and Generator complete.....	1.35
T-88	Generator complete.....	.36
104-210	Generator Lock Nut.....	.08
112-323	Burner Cap and Screen.....	.15
115-136	Filler Plug Gasket..... 2 for	.06
117-147	Handle Lock Nut.....	.18

PRICE LIST OF PARTS—Continued

Parts No.	All parts interchangeable except those listed under model 117	Retail Price
117-148	Feed Tube complete.....	\$.54
117-158	Burner Support complete.....	.45
117-341	Shade Holder and Screw.....	.06
117-342	Shade Holder, complete.....	.30
117-361	Air Intake and Bracket.....	.90
117-399	Burner with Valve and Generator complete.....	3.60
118-131	Filler Plug Cap.....	.30
118-140	Filler Plug complete.....	.48
118-145	Handle.....	.36
118-165	Fount with built-in Pump (Golden Brown).....	7.50
119-165	Fount with built-in Pump (Green Gold).....	7.50
118-504	Pump Cap.....	.15
118-517	Plunger Tube and Handle.....	.30
118-520	Plunger complete.....	.60
216-324	Burner Tube.....	.15
216-326	Burner Casting.....	.90
216-327	Valve Set Screw.....	.03
216-328	Set Screw Plate.....	.03
216-508	Leather Support Washer.....	.03
216-509	Cup Leather..... 2 for	.09
216-513	Spacer Sleeve.....	.03
216-538	Check Valve complete.....	.24
216-654	Valve Body and Nipple.....	.36
217-144	Screen and Holder for Feed Tube..... 2 for	.09
220-218	Gas Tip.....	.06
362-950	Wrench.....	.15
401-511	Cushion Spring.....	.03
409-503	Hex. Brass Nut.....	.03
409-510	Plunger Lower Washer.....	.03

Model 117 With Separate Pump



The following parts are for Model No. 117 only, and are not interchangeable on Models Nos. 118 or 119. All parts for Lamp No. 117, except those shown on this fount and handle illustration, may be ordered from the complete lamp parts illustration on opposite page.

Parts No.	Retail Price
101-522	Separate Pump..... \$.75
115-138	Check Valve Body and Ball..... .30
117-131	Filler Plug Cap..... .30
117-132	Air Stem..... .18
117-145	Handle..... .36
117-164	Filler Plug complete..... .60
117-165	Fount (Stippled Green) less Pump 5.40